

# H U E S e e

## Fundamentals









# Table of Contents

## About HueSee

<b>ABOUT US</b>	6
<b>COLOR CREAM – BRILLIANTLY DESIGNED COLOR</b>	9
<b>COLOR CREAM</b>	10
<b>COLOR CREAM – PIGMENTS</b>	12
<b>COLOR CREAM – KEY INGREDIENTS</b>	13
<b>COLOR CREAM – DESIGNED FOR CREATIVITY</b>	14
<b>COLOR CREAM – DESIGNED TO BE SIMPLE</b>	15

## Color Theory

<b>COLOR WHEEL</b>	18 - 19
<b>UNDERLYING PIGMENT</b>	20
<b>NEUTRALIZING GUIDE</b>	21

## Coloring

<b>LEVELS AND TONES</b>	24
<b>SHADE CODES</b>	25
<b>NUMERIC COLOR WHEEL</b>	27
<b>ALPHANUMERIC COLOR WHEEL</b>	28
<b>SHADE GUIDE</b>	30 - 31
<b>DEVELOPERS</b>	34 - 35
<b>TYPES OF COLOR &amp; INSTRUCTIONS</b>	36 - 37
<b>PRE-PIGMENTATION</b>	38
<b>PRE-PIGMENTATION GUIDE</b>	39

## Bleaching

<b>BLEACHING POWDER, KEY INGREDIENTS &amp; INSTRUCTIONS</b>	42 - 43
<b>CHARCOAL BLEACHING CREAM, KEY INGREDIENTS &amp; INSTRUCTIONS</b>	44 - 45

# About HueSee

● About HueSee

<b>ABOUT US</b>	6
<b>COLOR CREAM – BRILLIANTLY DESIGNED COLOR</b>	9
<b>COLOR CREAM</b>	10
<b>COLOR CREAM – PIGMENTS</b>	12
<b>COLOR CREAM – KEY INGREDIENTS</b>	13
<b>COLOR CREAM – DESIGNED FOR CREATIVITY</b>	14
<b>COLOR CREAM – DESIGNED TO BE SIMPLE</b>	15







# H U E S E E

We have one goal in mind: to **SIMPLIFY YOUR LIFE** with practical coloring products adapted to your daily salon needs.

Conceived in Canada, developed in Italy, our products are the result of **CANADIAN INGENUITY** and **ITALIAN EXPERTISE**.

Canadian hairstylists and Italian chemists worked together to create easy-to-use coloring products that provide consistent, successful results every time.



ABOUT HUESEE

Scan the QR code to learn more.

# Shades



# Developers



# Lighteners





4.35 / 4Gb



**Sarah**  
MTL Collection



# Brilliantly Designed Color

It is as simple as **1**, **2**, **3**.

---

## **1** VERSATILE

Our permanent shades transform into demi-permanent shades by simply adjusting the color/developer ratio, developer volume and processing time. Easily manage your inventory with fewer products to keep in stock.

---

## **2** COVERING

100% gray hair coverage is easy to achieve with any permanent shade, regardless of the percentage of gray hairs. Forget about trying to find the perfect formula to cover grays—using a single shade will suffice.

---

## **3** PERFECTING

Getting an even color is easy with our permanent and demi-permanent shades that even out irregularities in the base color within one or two levels. HueSee offers a perfect color result, every time.

# Color Cream

Experience HueSee's **VERSATILE**, **COVERING** and **PERFECTING** color. Ideal for demi-permanent or permanent use, it guarantees easy application, vibrant, fade-resistant color, and 100% gray coverage.



## VERSATILE COLOR

Use as Permanent or Demi-Permanent

## COVERING COLOR

Offers 100% Gray Hair Coverage with any Permanent Shade

## PERFECTING COLOR

Evens out Irregularities in the Base Color

Shiny, Vibrant, Fade-Resistant Color

Hydrates Hair

Strengthens Hair

Offers Maximum Scalp Comfort

Easy to Apply

Economic Color/Developer Ratio  
(1:1½ to 1:2)

Large Tubes (100 ml / 3.38 fl oz)



SHADES

Scan the QR code to learn more.



VEGAN



GLUTEN-FREE



CRUELTY-FREE



LOW AMMONIA

100 ML | 3.38 FL OZ



# Eléonore

MTL Collection

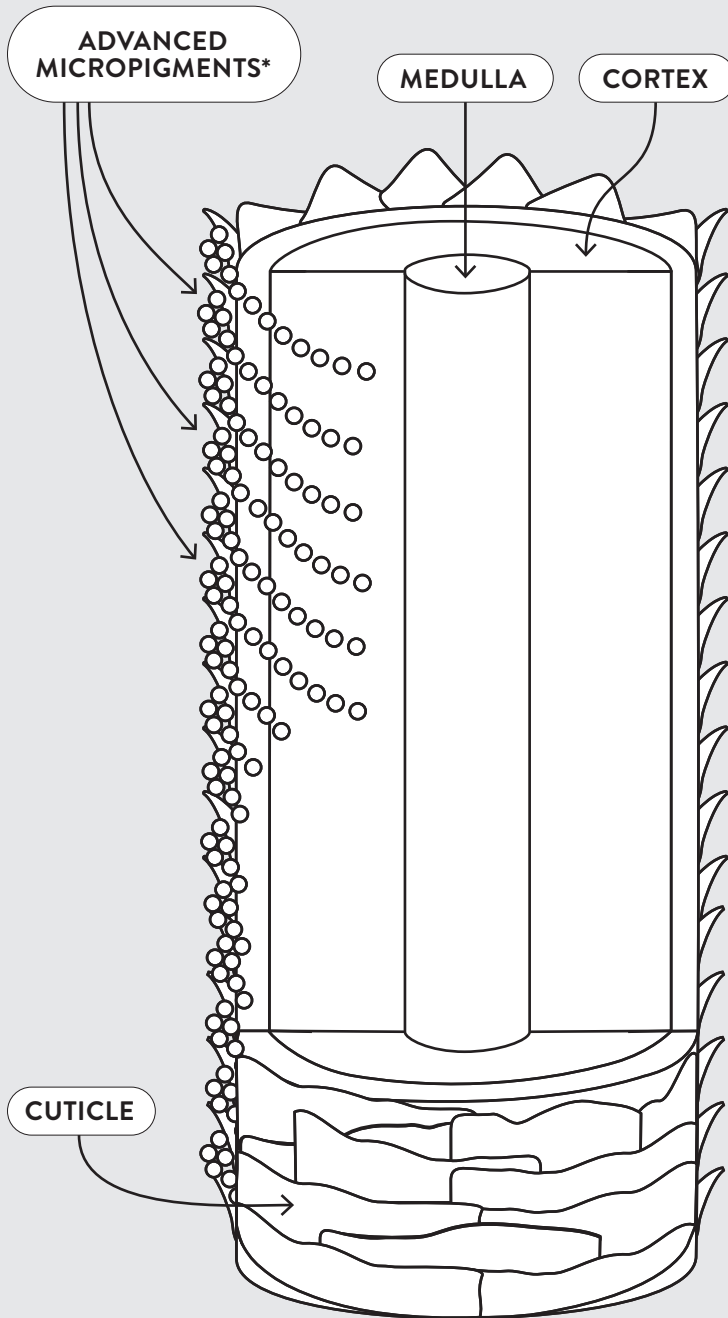
9.21 / 9Va  
0.66 / RR

9.21 / 9Va  
10.21 / 10Va  
0.66 / RR

10.43 / 10Cg  
0.66 / RR



# Pigments



## Advanced Micropigments\*

Thanks to their tiny size, our advanced micropigments easily and thoroughly penetrate the hair cuticle. The result is an **extremely rich and precise color**. Our advanced micropigments migrate more deeply into the cortex, where they are trapped for **better color retention**.

## 99.9%+ Pure Pigments\*

With a purity surpassing 99.9%, our pigments provide **vibrant, luminous and long-lasting color**.

## 100% Reactive Pigments

Our hair color was developed according to the principles of stoichiometry for a perfectly balanced reaction, in which all our oxidizing pigments, reacting to the oxygen in the developer, react 100% and in a controlled manner. The result is a final **color that's more precise, stable and long-lasting**. There are no leftover excess pigments (which could interact with each other randomly to create harmful or irritating molecules, interact with other substances in the hair and alter the final color, or not react at all and irritate the scalp). By applying a stoichiometric balance, **our color produces predictable and consistent results, working at full strength while being gentle on the hair and scalp**.

» \*Advanced micropigments and 99.9%+ pure pigments are found in our permanent, demi-permanent, super lightener and booster shades.

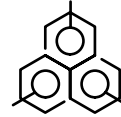


# Key Ingredients



## COCONUT FATTY ACIDS\*

To Maintain the  
Hair's Strength



## SYNTHETIC BEESWAX

To Trap the Hair's Moisture  
for Longer Lasting Color



## POLYQUATERNIUM-22

To Makes the Hair Silky and  
Provides Body and Shine



## CETEARYL ALCOHOL

To Help in Color Application for  
Even Saturation and Perfect Coloring



## HYDROLYZED PEA PROTEIN



## POMEGRANATE EXTRACT



## AVOCADO EXTRACT



## APRICOT EXTRACT

These four ingredients work in synergy to **HYDRATE**, **PROTECT**, and **SOOTHE** the scalp, providing maximum comfort throughout and after the coloring process.\*\*

- » \*Coconut fatty acids are found in cocamidopropyl betaine.
- » \*\*Hydrolyzed pea protein and fruit extracts are found in our permanent, demi-permanent, super lightener and booster shades.

COLOR CREAM

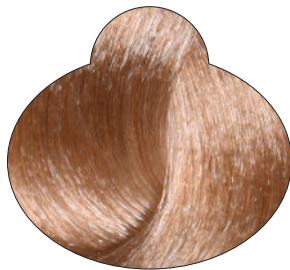
# Designed for Creativity

Have fun with our palette of shades that can be used **INDIVIDUALLY** or **COMBINED** to create infinite possibilities.

6.00 / 6NN



10.00 / 10NN



8.11 / 8AA



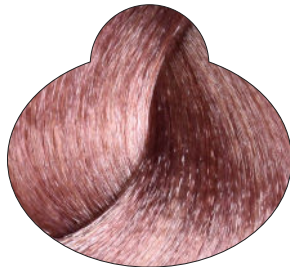
10.12 / 10Av



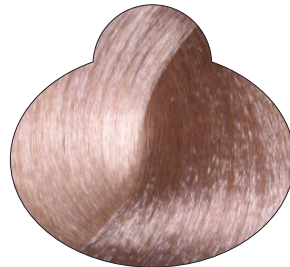
5.22 / 5VV



9.21 / 9Va



10.72 / 10Mv



6.66 / 6RR



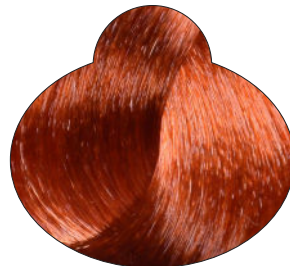
6.77 / 6MM



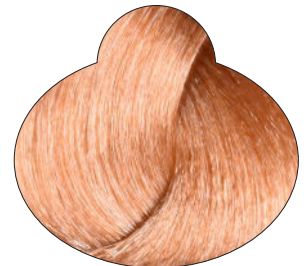
6.34 / 6Gc



7.43 / 7Cg



10.34 / 10Gc



+ MANY MORE!



# Designed to be Simple

We design **EASY-TO-USE** and **SMART PRODUCTS** always keeping the hairstylist in mind. We also create simple-to-use tools to help you at every step of the coloring process.

## EASY-TO-READ LABELS

On the Top of the Box

**HUESEE**  
 1 → NATURAL / NATUREL  
 2 → 6.00 / 6NN  
 3 → ○ 1:1½    ◐ 1:2

1 FAMILY TONE

2 SHADE CODE

Numeric / Alphanumeric

3 TYPE OF COLOR & RATIO



## EASY-TO-READ INSTRUCTIONS

On the Side of the Box

○ PERMANENT COLOR  
 COLORATION PERMANENTE  
 COLORACIÓN PERMANENTE



10-40 VOL

30-40 MIN

◐ DEMI-PERMANENT COLOR  
 COLORATION DEMI-PERMANENTE  
 COLORACIÓN DEMIPERMANENTE



3.5 VOL

20-30 MIN

⚡ SUPER LIGHTENER  
 SUPER ÉCLAIRCISSANT  
 SÚPER ACLARADOR



30-40 VOL

45-60 MIN

⊗ PERMANENT BOOSTER  
 AMPLIFICATEUR PERMANENT  
 INTENSIFICADOR PERMANENTE



10-40 VOL

30-40 MIN

⊗ DEMI-PERMANENT BOOSTER  
 AMPLIFICATEUR DEMI-PERMANENT  
 INTENSIFICADOR DEMIPERMANENTE



3.5 VOL

20-30 MIN

⊗ MAGIC  
 LIGHTENING BOOSTER  
 AMPLIFICATEUR ÉCLAIRCISSANT  
 INTENSIFICADOR ACLARADOR



10-40 VOL

30-40 MIN

## QUICK RATIO TABLE

	:		Total
--	---	--	-------

$$10 \text{ G} + 15 \text{ G} = 25 \text{ G}$$

$$20 \text{ G} + 30 \text{ G} = 50 \text{ G}$$

$$30 \text{ G} + 45 \text{ G} = 75 \text{ G}$$

$$40 \text{ G} + 60 \text{ G} = 100 \text{ G}$$

$$50 \text{ G} + 75 \text{ G} = 125 \text{ G}$$

	:		Total
--	---	--	-------

$$10 \text{ G} + 20 \text{ G} = 30 \text{ G}$$

$$20 \text{ G} + 40 \text{ G} = 60 \text{ G}$$

$$30 \text{ G} + 60 \text{ G} = 90 \text{ G}$$

$$40 \text{ G} + 80 \text{ G} = 120 \text{ G}$$

$$50 \text{ G} + 100 \text{ G} = 150 \text{ G}$$

# Color Theory

 Color Theory

<b>COLOR WHEEL</b>	18 - 19
<b>UNDERLYING PIGMENT</b>	20
<b>NEUTRALIZING GUIDE</b>	21



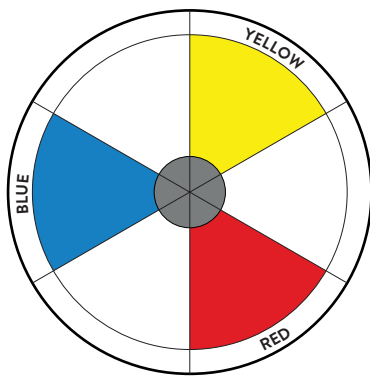




# Color Wheel

The color wheel is **YOUR BEST FRIEND** for mastering hair color.

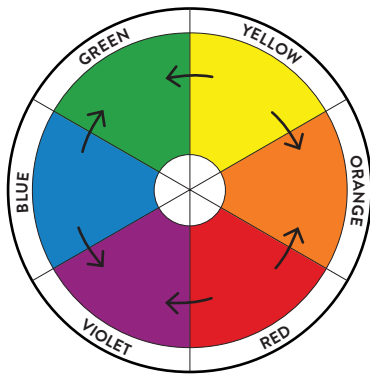
By understanding the colors' positioning on the wheel and how they interact with one another, you can color confidently and create incredible hair colors.



## Primary Colors

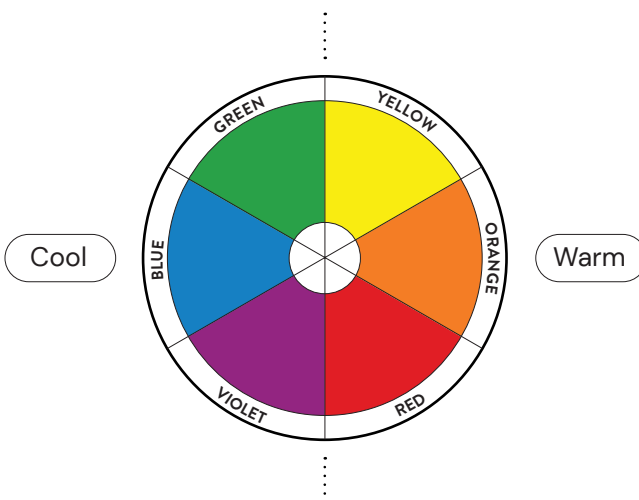
Primary colors are the basis for the color wheel and all other colors. Located in each third of the wheel, they are **blue, yellow, and red**.

**Note:** The blend of the three primary colors creates a neutral color (gray).



## Secondary Colors

Secondary colors are created by mixing two primary colors in equal proportions. On the color wheel, they are located between the two primary colors they are composed of: **green** (blue + yellow), **orange** (yellow + red), and **violet** (blue + red).



## Cool & Warm Colors

On the color wheel illustrated here, cool colors are located on the left side and warm colors on the right. The cool colors are **green, blue** and **violet**. The warm colors are **yellow, orange** and **red**.



## Opposite Colors

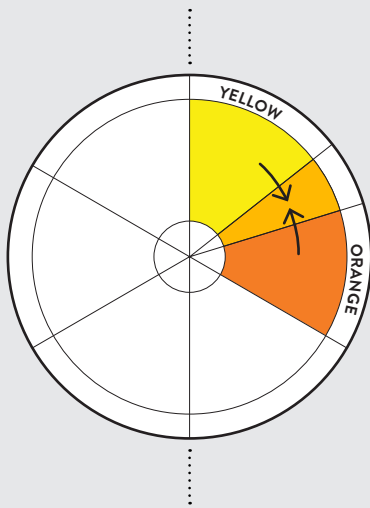
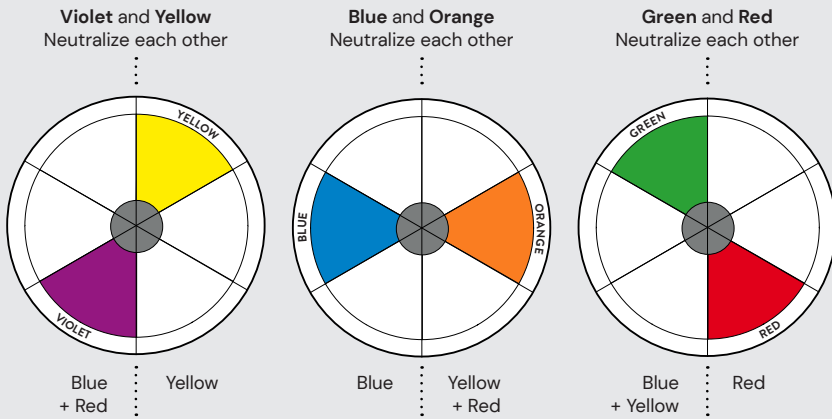
When two opposite colors on the color wheel are mixed, the result is always a blend of the three primary colors that creates a neutral color (gray). We therefore say that opposite colors neutralize each other.

**Example:** If **violet** and **yellow** are mixed, the result is a blend of the three primary colors:

**Violet** (**blue + red**) and **yellow** = **gray**

It is interesting to note that opposite colors are always made up of a cool color and a warm color.

**Example:** **Violet** is a cool color and **yellow** is a warm color.



## Adjacent Colors

When two adjacent colors on the color wheel are mixed, they enhance each other.

**Example:** If **yellow** and **orange** are mixed:

- » **Yellow** becomes more **orange**.
- » **Orange** becomes more **yellow**.

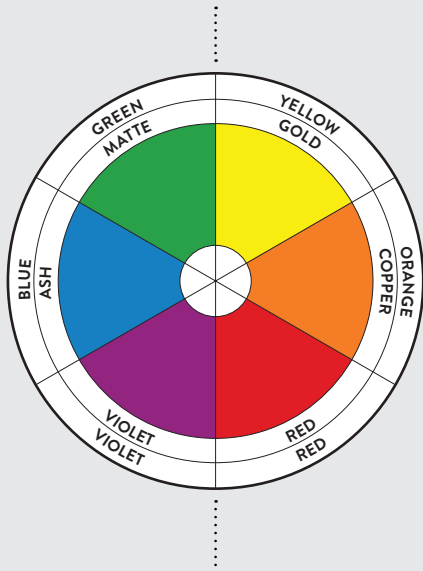
## Color Wheel Applied to Hair Color

Primary and secondary colors make up the main hair tones:

Color	Hair Tone	Color	Hair Tone
Green	= Matte	Yellow	= Gold
Blue	= Ash	Orange	= Copper
Violet	= Violet	Red	= Red

Although the tones don't have the same name as the color they are associated with, they interact with each other in the same way as the colors:

- » Opposite tones neutralize each other
- » Adjacent tones enhance each other



# Underlying Pigment

The underlying pigment must always be taken into consideration when formulating a permanent color.

---

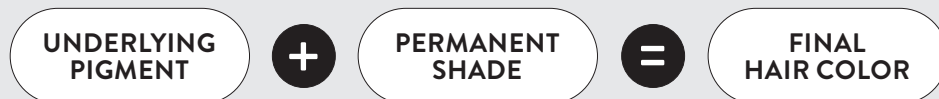
## What is the Underlying Pigment?

The underlying pigment is a pigment that appears during the lightening process.

The simplest way to identify the underlying pigment is to look at the hair color after lightening. For example, at Level 10, the hair is light yellow. Therefore, light yellow is the underlying pigment of Level 10.

When applying a permanent color that lightens and colors in a single step, the underlying pigment of the final level is not exposed visually, but it will still interfere with the final hair color.

Remember that the final hair color is always the result of combining the underlying pigment with the permanent shade that's applied.



## Neutralize or Enhance

You have 2 options with the underlying pigment. You may either **Neutralize** or **Enhance** it.

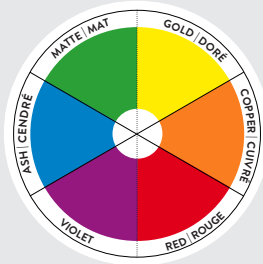
- 1 **Neutralize:** If the underlying pigment is not desired, you must neutralize it by using the opposite tone on the color wheel.
- 2 **Enhance:** If the underlying pigment is desired, you may enhance it with an adjacent tone on the color wheel.

**Example:** The underlying pigment of Level 10 (*light yellow*) may be **Neutralized** by using a violet tone; or may be **Enhanced** by using a gold tone or copper tone.

## Neutralizing Guide

The following page includes a neutralizing guide showing the **Underlying Pigment**, the **Neutralizing Pigment** and the **Neutralizing Tone**, for each final level.

UNDERLYING PIGMENT PIGMENT SOUS-JACENT		NEUTRALIZING GUIDE GUIDE DE NEUTRALISATION	
LEVEL NIVEAU	COLOR COULEUR	COLOR COULEUR	TONE REFLET
10	Light Yellow Jaune pâle	Violet Violet	.2 / V
9	Yellow Jaune	Violet Violet	.22 / VV
8	Yellow / Orange Jaune / Orange	Violet / Blue Violet / Bleu	.21 / Va
7	Orange Orange	Blue Bleu	.1 / A
6	Orange / Red Orange / Rouge	Blue / Green Bleu / Vert	.11 / AA + .7 / M
5	Red Rouge	Green Vert	.7 / M
4	Dark Red Rouge foncé	Green Vert	.7 / M
3	Very Dark Red Rouge très foncé	Green Vert	.7 / M
2	Red / Violet Rouge / Violet		
1	Dark Red / Violet Rouge / Violet foncé		



# Neutralizing Guide

Identify the Underlying Pigment of each Level and which Tone to use to **NEUTRALIZE** it.



# Coloring

● Coloring

<b>LEVELS AND TONES</b>	24
<b>SHADE CODES</b>	25
<b>NUMERIC COLOR WHEEL</b>	27
<b>ALPHANUMERIC COLOR WHEEL</b>	28
<b>SHADE GUIDE</b>	30 - 31
<b>DEVELOPERS</b>	34 - 35
<b>TYPES OF COLOR &amp; INSTRUCTIONS</b>	36 - 37
<b>PRE-PIGMENTATION</b>	38
<b>PRE-PIGMENTATION GUIDE</b>	39














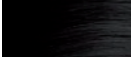


# Levels and Tones

A shade is made up of a **LEVEL** plus one or more **TONES**.

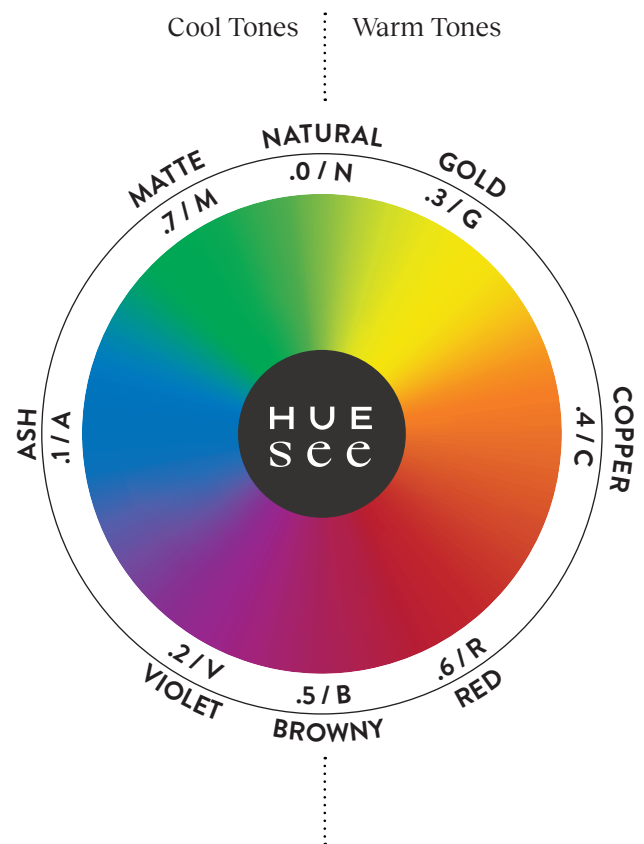
## Levels

The levels indicate the **shade's intensity** and are represented by numbers 1 to 10. HueSee uses the international system, where **1 represents the darkest level** (black) and **10 represents the lightest level** (very light blonde).

	10	Very Light Blonde
	9	Light Blonde
	8	Blonde
	7	Medium Blonde
	6	Dark Blonde
	5	Light Brown
	4	Medium Brown
	3	Dark Brown
	2	Very Dark Brown
	1	Black

## Tones

The tones refer to the colors that are present in the shade. For ease of use, HueSee uses both **numbers** and **letters** to identify the tones.

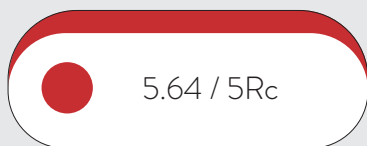


The **Primary Tone** is the shade's main tone and determines if the shade is cool or warm. The **Secondary Tone** is subtle and indicates if the shade is cooler or warmer.



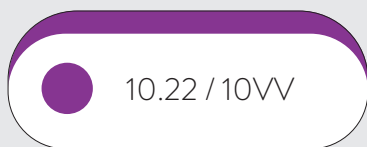
# Shade Codes

## Example 1



LEVEL	PRIMARY TONE	SECONDARY TONE
5	.6	4
5	R	c
Light Brown	Red <i>Warm Shade</i>	Copper <i>Warmer</i>

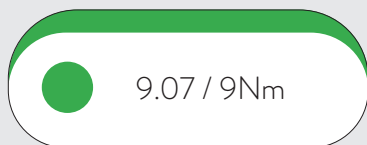
## Example 2



LEVEL	PRIMARY TONE	SECONDARY TONE
10	.2	2
10	V	V
Very Light Blonde	Violet <i>Cool Shade</i>	Violet <i>Cooler</i>

When the primary tone and secondary tone are identical (**Example:** .22 / VV), the shade is considered intense.

## Example 3



LEVEL	PRIMARY TONE	SECONDARY TONE
9	.0	7
9	N	m
Light Brown	Natural <i>Neutral Shade</i>	Matte <i>Cooler</i>

When there is a .0 or N in front of the secondary tone (**Example:** .07 / Nm), the tone's intensity is diluted.



# Christophe

MTL Collection

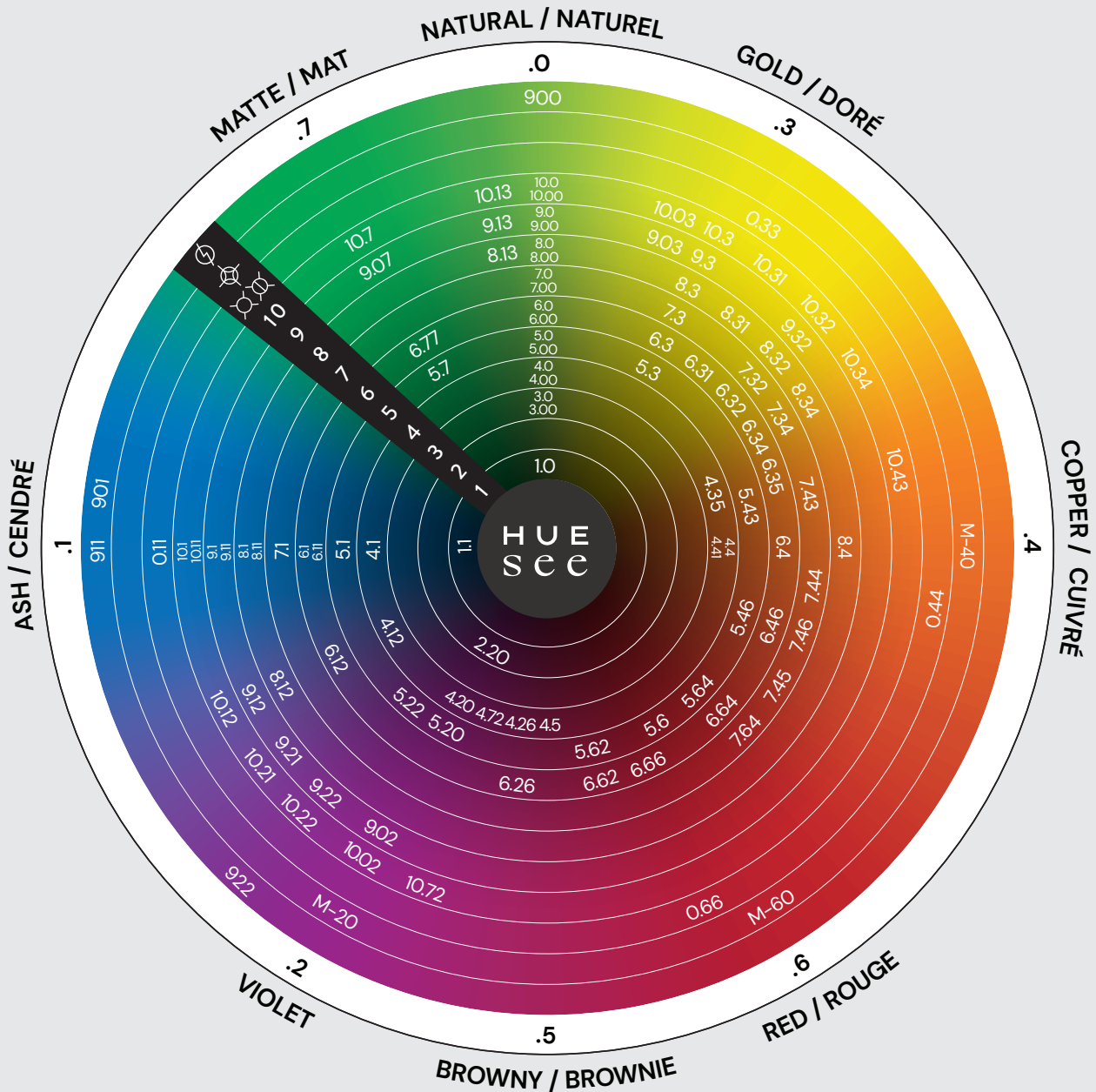
4.72 / 4Mv




# Color Wheel / Cercle chromatique

Cool Tones  
Reflets froids

Warm Tones  
Reflets chauds



 Super Lightener  
Super éclaircissant

 **MAGIC** Lightening Booster  
Amplificateur éclaircissant

 Permanent Booster  
Amplificateur permanent

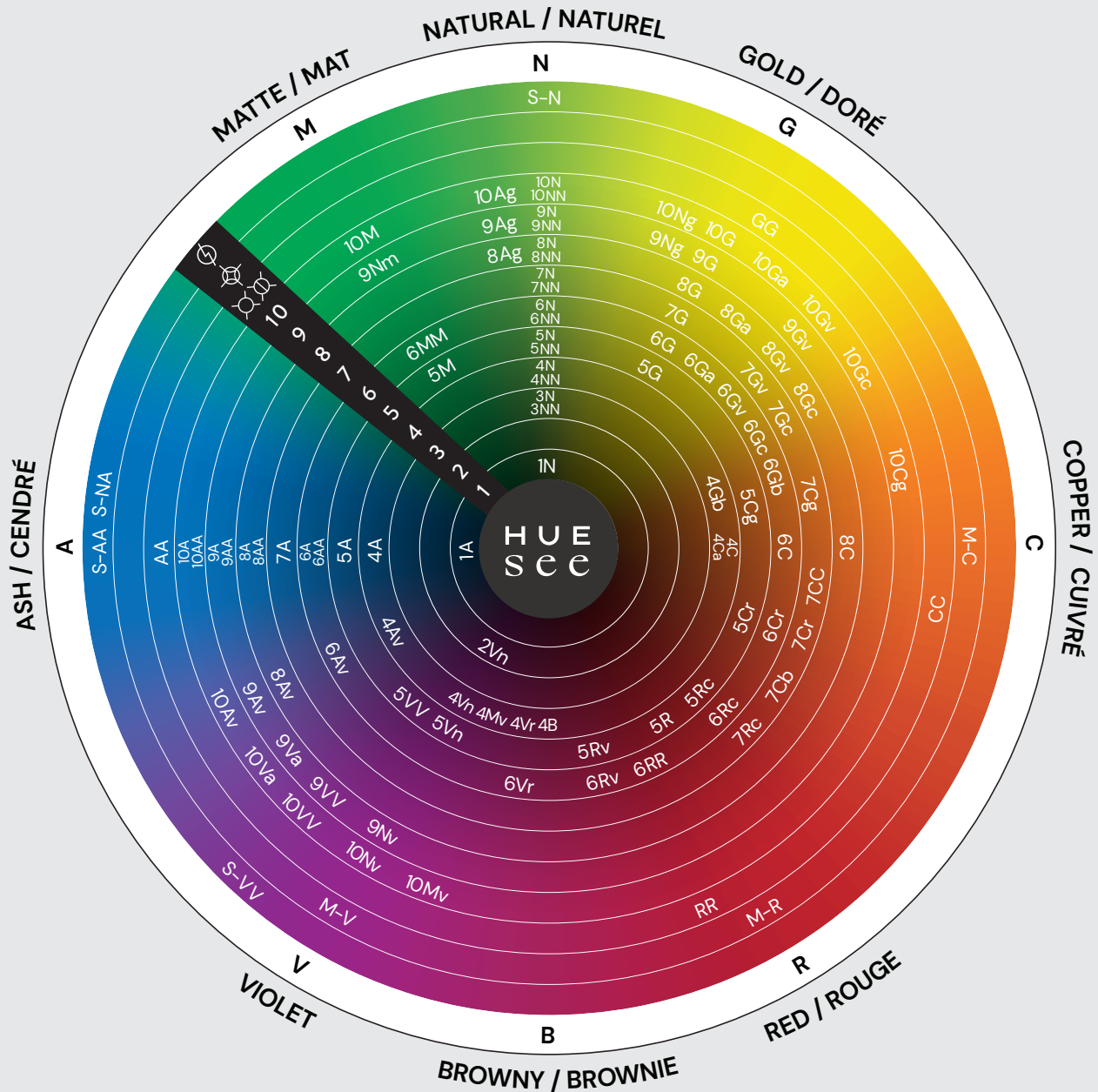
 Demi-Permanent Booster  
Amplificateur demi-permanent





# Color Wheel / Cercle chromatique

Cool Tones / Reflets froids  
Warm Tones / Reflets chauds



Super Lightener  
Super éclaircissant

**MAGIC** Lightening Booster  
Amplificateur éclaircissant

Permanent Booster  
Amplificateur permanent

Demi-Permanent Booster  
Amplificateur demi-permanent





# Patricia

MTL Collection

6.11 / 6AA  
6.12 / 6Av





# Shade Guide / Guide des nuances

NATURAL  
NATUREL

ASH  
CENDRÉ

VIOLET

BROWNIE  
BROWNY

MATTE  
MAT

.0 / N   .00 / NN   .1 / A   .11 / AA   .12 / Av   .13 / Ag   .02 / Nv   .20 / Vn   .21 / Va   .22 / VV   .26 / Vr   .5 / B   .07 / Nm   .7 / M   .77 / MM   .72 / Mv

10													
9													
8													
7													
6													
5													
4													
3													
2													
1													

CLEAR  
TRANSPARENT

SUPER LIGHTENER  
SUPER ECLAIRCISSANT

BOOSTER  
AMPLIFICATEUR

MAGIC  
LIGHTENING BOOSTER  
AMPLIFICATEUR ECLAIRCISSANT



0.00



900  
S-N



901  
S-NA



911  
S-AA



922  
S-VV



011  
AA



033  
GG



044  
CC



066  
RR



M-20  
M-V



M-40  
M-C



M-60  
M-R





# Shade Guide / Guide des nuances

	GOLD DORÉ					COPPER CUIVRE					RED ROUGE					
	.03 / Ng	.3 / G	.31 / Ga	.32 / Gv	.34 / Gc	.35 / Gb	.4 / C	.44 / CC	.41 / Ca	.43 / Cg	.45 / Cb	.46 / Cr	.6 / R	.66 / RR	.62 / Rv	.64 / Rc
10																
9																
8																
7																
6																
5																
4																

**USAGE INSTRUCTIONS**  
INSTRUCTIONS D'UTILISATION

	Permanent Color Coloration permanente		10-40 VOL	30-40 MIN
	Demi-Permanent Color Coloration demi-permanente		3.5 VOL	20-30 MIN
	Super Lightener Super éclaircissant		30-40 VOL	45-60 MIN
	Permanent Booster Amplificateur permanent		10-40 VOL	30-40 MIN
	Demi-Permanent Booster Amplificateur demi-permanent		3.5 VOL	20-30 MIN
	<b>MAGIC</b> Lightening Booster Amplificateur éclaircissant		10-40 VOL	30-40 MIN

**RATIO TABLE**  
TABLE DES RATIOS

	:		Total
10 G	+	15 G	= 25 G
20 G	+	30 G	= 50 G
30 G	+	45 G	= 75 G
40 G	+	60 G	= 100 G
50 G	+	75 G	= 125 G

	:		Total
10 G	+	20 G	= 30 G
20 G	+	40 G	= 60 G
30 G	+	60 G	= 90 G
40 G	+	80 G	= 120 G
50 G	+	100 G	= 150 G

**TECHNICAL HELP**  
ASSISTANCE TECHNIQUE

For technical assistance with our coloring products, please contact our education team.

Pour obtenir de l'assistance technique avec notre coloration, veuillez communiquer avec notre équipe d'éducation.

**EDUCATION@HUESEEHAIR.COM**

HUESEEHAIR

HUESEEHAIR.COM









# Daria

MTL Collection

4.26 / 4Vr  
6.26 / 6Vr

6.46 / 6Cr





# Developers

Our developers have a **SMOOTH TEXTURE** to offer the optimal saturation all colorists are looking for.



Fluid Application  
& Optimal Saturation

Unscented Formula

Designed for  
HueSee Products



DEVELOPERS  
Scan the QR code  
to learn more.



VEGAN



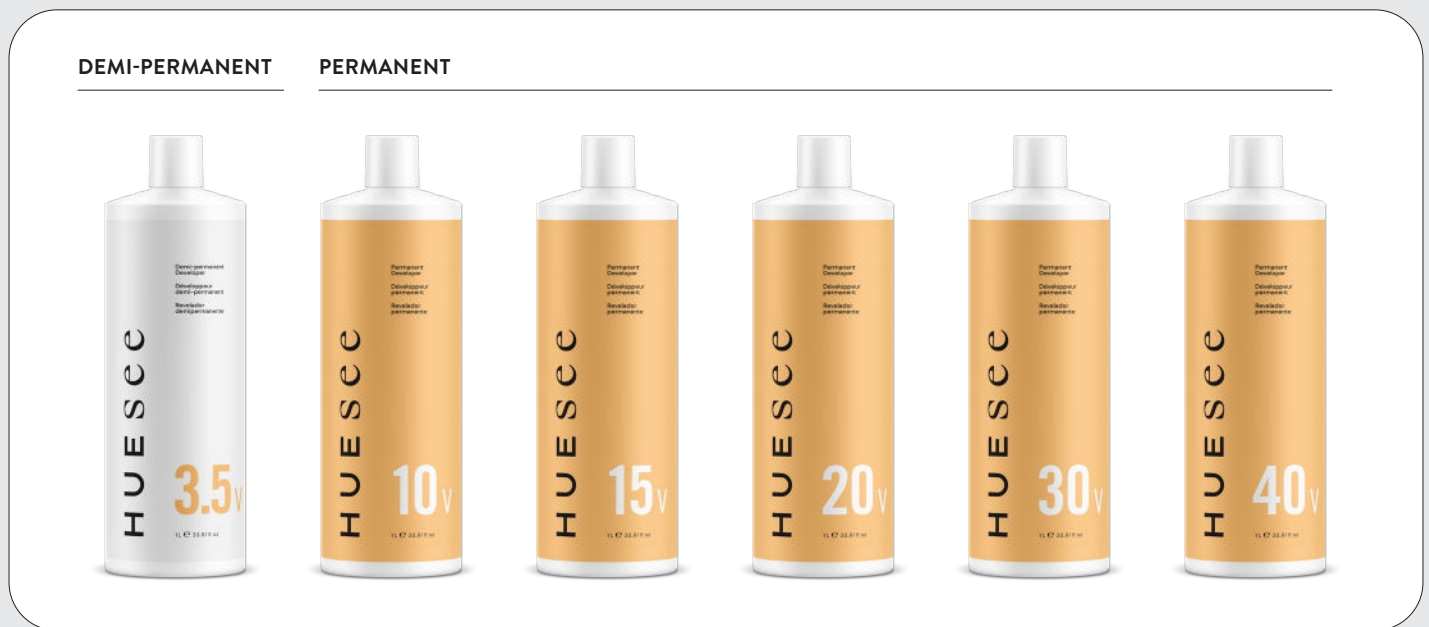
GLUTEN-FREE



CRUELTY-FREE

1 L | 33.8 FL OZ

Six different **DEVELOPERS** for all your coloring needs.



VOLUME	3.5 <sub>V</sub>	10 <sub>V</sub>	15 <sub>V</sub>	20 <sub>V</sub>	30 <sub>V</sub>	40 <sub>V</sub>
HYDROGEN PEROXIDE %	1.05%	3%	4.5%	6%	9%	12%
LEVELS OF LIFT	Color Deposit Only	½ to 1 Level	1 to 1½ Levels	1½ to 2 Levels	2½ to 3 Levels	3½ to 4 Levels



# Types of Color

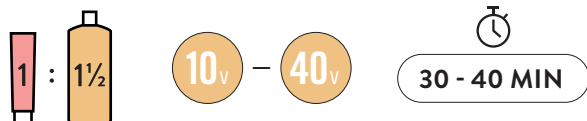
TYPE OF COLOR	WHAT IT DOES	USE IT TO
○ Permanent Color	» <b>LIGHTENS</b> & <b>COLORS</b>	» Color hair permanently » Get 100% gray hair coverage
◐ Demi-Permanent Color	» <b>COLORS</b> gently <b>WITHOUT ALTERING</b> the natural pigments	» Add tone-on-tone reflects to natural hair » Color lightened hair » Revive the tones of faded color in the lengths and ends of the hair » Harmonize grays
⚡ Super Lightener	» <b>LIGHTENS</b> up to 4 levels <b>WHILE NEUTRALIZING</b> regular underlying pigments to create perfectly balanced light colors	» Color natural hair with the lightest shades possible without bleaching
⊗ Permanent Booster	» <b>BOOSTS</b> the intensity of your formulas	» Neutralize or enhance a tone » Add depth to a permanent color » Create vibrant and colorful permanent shades on pre-lightened hair
⊗ Demi-Permanent Booster	» <b>BOOSTS</b> the intensity of your formulas	» Neutralize or enhance a tone » Add depth to a demi-permanent color

TYPE OF COLOR	WHAT IT DOES	USE IT TO
⊗ <b>MAGIC</b> Lightening Booster	» <b>AMPLIFIES</b> & <b>LIGHTENS</b> up to 4 levels to create stunning contrasts	» Create vibrant and vivid permanent colors to natural or colored hair without bleaching



# Instructions

## ○ Permanent Color



For complete gray hair coverage, use any permanent shade with a 20-volume developer.

*Note that the higher the percentage of gray hair, the more tones of the selected shade will be apparent in the final color.*

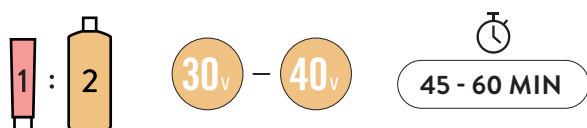
## ◐ Demi-Permanent Color



To vary the color deposit of a demi-permanent shade, vary the processing time between 20 and 30 minutes.

For maximum color deposit and maximum color retention, respect the processing time of 30 minutes.

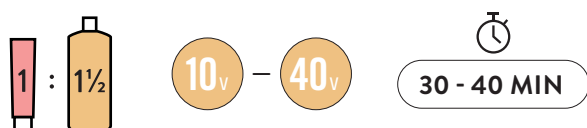
## ⚡ Super Lightener



For best results, use super lighteners on natural hair of level 5 and higher.

Adjust the shade to achieve the desired final tone, if necessary.

## ⊗ Permanent Booster



To neutralize or enhance a tone, or to help add depth to a permanent color, add a permanent booster to your formula.

**Example:** 25g of 6.66 / 6RR + 5g of 0.66 / RR and 45g of 10- to 40-volume developer

If you're feeling more creative, use a permanent booster with a 10-volume developer on pre-lightened hair.

**Example:** 30 g of 0.44 / CC and 45 g of 10-volume developer

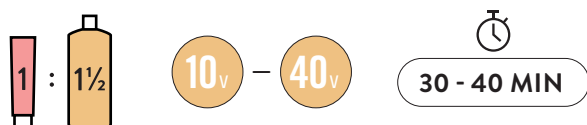
## ⊗ Demi-Permanent Booster



To neutralize or enhance a tone, or to help add depth to a demi-permanent color, add a demi-permanent booster to your formula.

**Example:** 25 g of 8.1 / 8A + 5 g of 0.11 / AA and 60 g of 3.5-volume developer

## ⊗ MAGIC Lightening Booster



For best results, use the Magic shades on natural hair of level 4 or higher or colored hair of level 5 or higher.

When applying to the scalp, use a developer that is 20 volumes or less.

Do not use heat.

*Note that Magic shades can be blended but cannot be mixed with other shades in the line.*

- » Do not use heat.
- » HueSee hair color was developed to be used on dry hair. For optimal and accurate results, always apply to dry hair.



# Pre-Pigmentation

Pre-pigmentation is a necessary step when you want to **DARKEN THE HAIR** by **2 + LEVELS**. By providing additional pigments to the hair, you allow the final color to better resist fading.

## Finding the Right Shade For Pre-Pigmentation

To apply pre-pigmentation correctly, it's important to choose a pre-pigment shade that meets these 3 conditions:

- ① The pre-pigment shade must be one level lighter than the final shade.
- ② The pre-pigment shade must only have warm tones.
- ③ The pre-pigment shade must have, at least, one tone that matches the underlying pigment of the final level.

There are often several possible pre-pigment shades. Select the one that best meets the final desired color that you want to achieve.

**Example :** Before coloring hair with the final shade 6.0 / 6N, you could use the pre-pigment shade 7.43 / 7Cg. This shade meets the 3 conditions. ① It is one level lighter than the final shade (level 7 versus level 6). ② All its tones are warm (copper and gold). ③ At least one of its tones (copper) matches the underlying pigment of level 6 (orange/red).

## Pre-Pigmentation Instructions

**Step 1:** Begin by applying the selected pre-pigment shade according to the instructions below:



**Step 2:** Once the processing time is done, rinse, shampoo and dry the hair. Apply the final permanent shade according to the instructions below:



## Pre-Pigmentation Guide

The following page includes a pre-pigmentation guide showing the **Pre-Pigment Shade Level** and the **Pre-Pigment Shade Tone(s)**, for each final level/ underlying pigment.

We've listed the tones that are most often used, but other tones are possible.

UNDERLYING PIGMENT PIGMENT SOUS-JACENT		PRE-PIGMENTATION GUIDE GUIDE DE PRÉCOLORATION	
LEVEL NIVEAU	COLOR COULEUR	LEVEL NIVEAU	STONE REFLET
10	Light Yellow Jaune pâle	—	-----
9	Yellow Jaune	10	.3 / G
8	Yellow / Orange Jaune / Orange	9	.3 / G + .34 / Gc
7	Orange Orange	8	.34 / Gc + .43 / Cg
6	Orange / Red Orange / Rouge	7	.34 / Gc + .43 / Cg
5	Red Rouge	6	.43 / Cg + .46 / Cr + .64 / Rc + .66 / RR
4	Dark Red Rouge foncé	5	.46 / Cr + .6 / R + .64 / Rc
3	Very Dark Red Rouge très foncé	5	.64 / Rc + .6 / R
2	Red / Violet Rouge / Violet	5	.6 / R
1	Dark Red / Violet Rouge / Violet foncé	5	.6 / R

# Pre-Pigmentation Guide

Identify the Pre-Pigment Shade Level and the Pre-Pigment Shade Tone(s) to apply pre-pigmentation correctly.



# Bleaching

● Bleaching

<b>BLEACHING POWDER, KEY INGREDIENTS &amp; INSTRUCTIONS</b>	42 - 43
<b>CHARCOAL BLEACHING CREAM, KEY INGREDIENTS &amp; INSTRUCTIONS</b>	44 - 45





# Bleaching Powder

HueSee's **POWERFUL** and **EXTRA-HYDRATING** bleaching powder lightens the hair **INCREDIBLY FAST**. It's easy to use, with no external additives required.

- Quickly Lightens up to 8 Levels
- Extra-Hydrating Formula
- Leaves Hair Soft & Silky
- Suitable for All Bleaching Techniques



- Creamy Texture
- Optimal Adhesion
- Light Peach Scent
- Dust-Free Lilac Powder

 **LIGHTENERS**  
Scan the QR code to learn more.

  
**VEGAN**

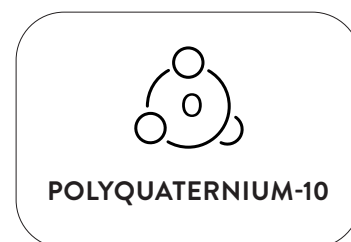
  
**GLUTEN-FREE**

  
**CRUELTY-FREE**

50 G | 1.76 OZ  
900 G | 2 LB  
2.7 KG | 6 LB

## BLEACHING POWDER

# Key Ingredients

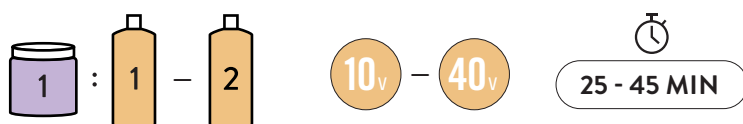


This blend of ingredients helps to **HYDRATE**, **SOFTEN**, **SMOOTHEN**, **REVITALIZE** and **PROTECT** the hair during the lightening process.

**HYDRATES** and **STRENGTHENS** hair for a perfect blonde.

# Instructions

## General Use



The bleaching powder can be mixed with the developer in a 1:1 to 1:2 ratio, without affecting the product performance. You can therefore vary the ratio (and consistency of the bleaching mixture) according to the technique used.

## Highlights Without Foil



Opt for a thick consistency that holds well in place. Mix the bleaching powder with the developer in a 1:1 ratio.

**Use paper between the sections.**

## Highlights With Foil



Opt for your preferred consistency. Mix the bleaching powder with the developer in a 1:1 to 1:2 ratio.

**Use the type of paper you prefer.**

*Suitable for all types of paper.*

## Applying to Scalp



Opt for a more fluid consistency that is easy to apply. Mix the bleaching powder with the developer in a 1:2 ratio.

**Do not use a cap.**

- » Shake before use.
- » Do not use heat. Applying heat is not required to obtain professional results.
- » For maximum effectiveness, use a scale to measure the quantity of charcoal bleaching cream and developer. Mix until fully blended.



# Charcoal Bleaching Cream

HueSee's Charcoal bleaching cream offers **EXCEPTIONAL LIGHTENING** with high-level **PROTECTION**. It keeps the hair structure intact, even during the most intense lightening processes.



Quickly Lightens up to 9 Levels

High-Protection Formula

Contains Purifying and Hydrating Ingredients

Leaves Hair Soft & Silky

Suitable for All Bleaching Techniques

Creamy Texture

Optimal Adhesion

Deep Charcoal Bleaching Cream



LIGHTENERS

Scan the QR code to learn more.



GLUTEN-FREE



CRUELTY-FREE

300 G | 10.58 OZ

# Key Ingredients



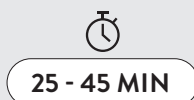
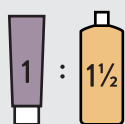
Its purifying properties help to **LIGHTEN** and **NEUTRALIZE** unwanted warm tones for quick and controlled lightening.



**HYDRATES** the hair and scalp, **STRENGTHENS** the hair and boosts its elasticity, prevents breakage and split ends for magnificent, healthy blondes.

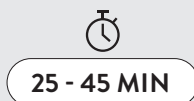
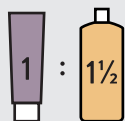
# Instructions

## General Use



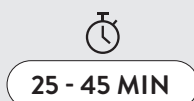
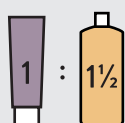
The charcoal bleaching cream must always be mixed with the developer in a 1:1½ ratio.

## Highlights Without Foil



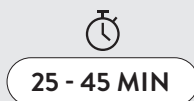
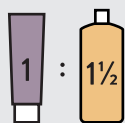
Use paper between the sections.

## Highlights With Foil



Use the type of paper your prefer.  
Suitable for all types of paper.

## Applying to Scalp



Do not use a cap.

- » Do not use heat. Applying heat is not required to obtain professional results.
- » For maximum effectiveness, use a scale to measure the quantity of charcoal bleaching cream and developer. Mix until fully blended.



# FAQ

Scan the QR code to read the most frequently asked questions:



FAQ

Scan the QR code to learn more.

## Technical Help

For technical assistance with our coloring products, please contact our education team:

[EDUCATION@HUESEEHAIR.COM](mailto:EDUCATION@HUESEEHAIR.COM)

## Learn More

Visit our our Instagram and Website for everything else:

 [HUESEEHAIR](https://www.instagram.com/HUESEEHAIR)

[HUESEEHAIR.COM](https://www.HUESEEHAIR.COM)

## COLLECTION

The looks presented in this technical guide are from our MTL Collection.

We would like to acknowledge and thank everyone who made this collection possible:

### **Kathy Simon**

(Creative Director & Artistic Director for HueSee)

### **Jean-Sébastien Lacombe**

(Artistic Director for HueSee)

### **Wendy Keating**

(Director of Education & Director of Product Development for HueSee)

Vanessa Boily (Hair Stylist)

Daria Anikanova (Model)

Patricia Poulin (Model)

Sarah Pattier (Model)

Eléonore Shreiber (Model)

Christophe Lamontagne (Model)

Katérie Portelance (Makeup Artist)

Mélanie Brisson (Stylist)

Justine Latour (Photographer)

Victor Collombet (Photography Assistant)

Michèle Ouellette (Project Coordinator)

Kaniav Davoodi (Shoot Assistant)







Simply brilliant.

We hope you have fun with our products.

Share your results using [@HUESEEHAIR](#)

H U E S E E

2024